

Design Count: 43w X 42h stitches

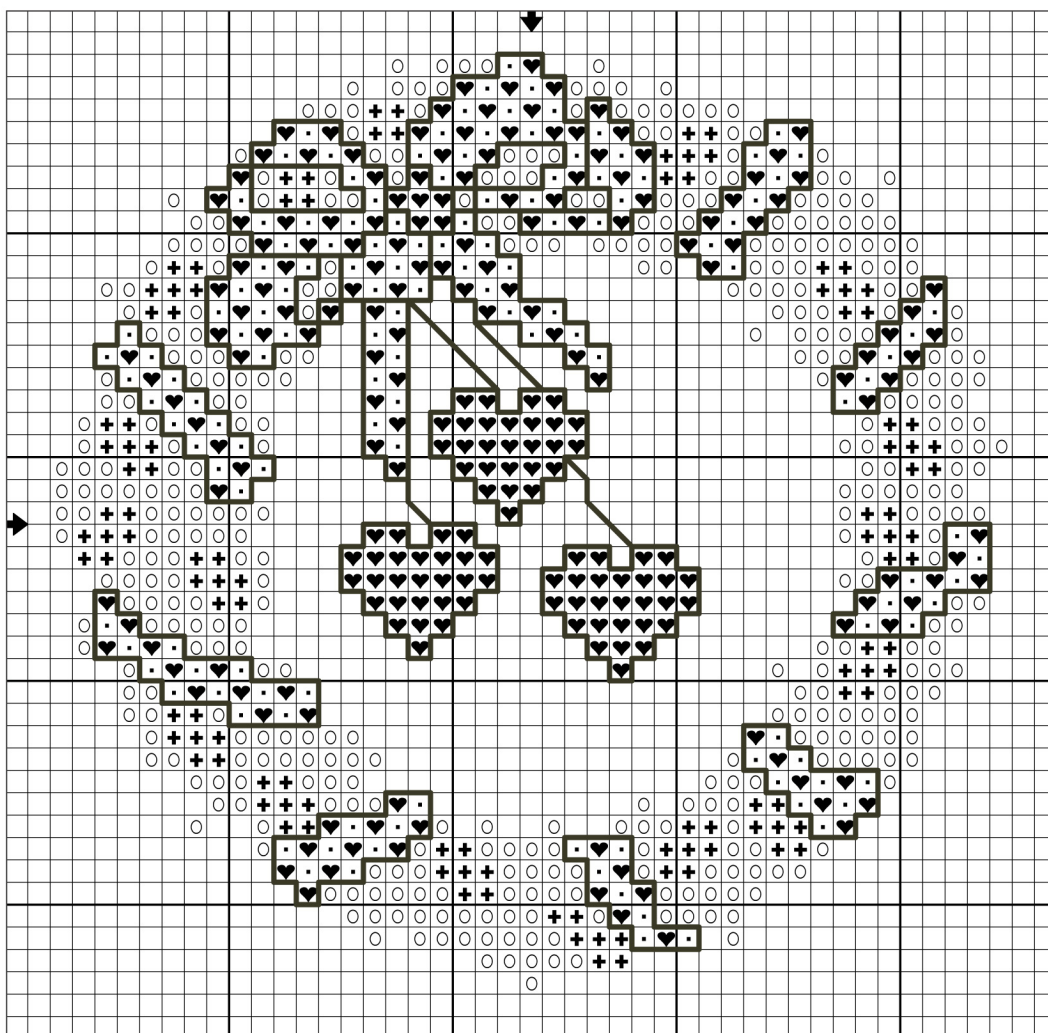
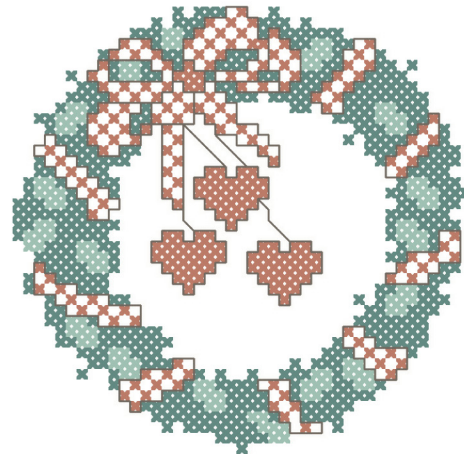
18-count - 2-3/8" w X 2-1/4" h

Cross stitch – two ply

- | | DMC | Color |
|---|-------|---------------------|
| ♥ | 498 | Christmas Red-DK |
| ○ | 909 | Emerald Green-VY DK |
| + | 913 | Nile Green-MD |
| . | Blanc | White |

Back stitch – one ply

- | | DMC | Color |
|---|------|-------------|
| — | 3371 | Black Brown |



The Janlynn Corporation allows a photocopy / enlargement of this chart for personal use. Selling or distributing copies of this chart is strictly prohibited.

The Janlynn Corporation

2070 Westover Road, Chicopee, MA 01022 USA

800-445-5565 (USA & Canada) ~ 413-206-0002 (International) ~ www.janlynn.com ~ Email: customerserv@janlynn.com